

Integration Note

Manufacturer:	Sainsmart
Model Number(s):	iMatic v2
g! Core Module Version:	g!8.2
Driver Developer:	Chowmain Software & Apps
Document Revision Date:	September 24, 2018

Overview & Supported Features

The SainSmart iMatic V2 provides 8 x 250V/AC 10A Relays channels that is controlled over ethernet TCP/IP. This unit is extremely affordable, is powered via a local 12vdc supply and is also din mountable. Other integrated solutions cost anywhere from 3 times to 10 times more. This is by far the cheapest way to integrate relays into ELAN.

THE FOLLOWING OPTIONS ARE SUPPORTED BY THE SAINSMART IMATIC V2 DRIVER:

- Control over all 8 outlets for on/off
- Feedback over all 8 outlets (polled every 30 seconds or instantly upon trigger)
- Ability to change IP address
- Ability to change port

THE FOLLOWING OPTIONS ARE NOT SUPPORTED BY THE SAINSMART IMATIC V2 DRIVER:

- This driver polls and as such does not provide instantaneous feedback if the relay is triggered externally.

Any feature not specifically noted as supported should be assumed to be unsupported.

Sainsmart iMatic v2 Purchase

You can purchase the hardware from the following website.

<https://www.sainsmart.com/products/rj45-tcp-ip-remote-control-board-with-integrated-8-ch-relay>

Sainsmart iMatic v2 Configuration

The Sainsmart iMatic v2 is configured to a static IP address of 192.168.1.4 out of the box. Please set this up to a static IP address on the same subnet as your ELAN system. Note that only 1 Sainsmart iMatic V2 is supported by your network due to hardware limitations.

You can set the unit up by going to <http://192.168.1.4/30000>

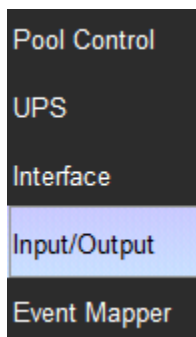
g! Configuration

This driver will provide control and feedback for the Sainsmart iMatic v2 on your network. The driver requires a valid licence for use. Licences can be purchased from Chowmain's distributor [Houselogix](#). Customers can also trial the driver out for 7 days prior to licence purchase. Dealers who have showrooms can demonstrate the driver for free via the Chowmain Dealer Showroom Licence. You can apply for this licence via the [Chowmain website](#). Please follow the steps below. If you encounter any issues please submit a ticket via the product page on the Houselogix website.

Installation Process

Once you have physically installed your Sainsmart iMatic v2 and have connected it via wifi to your network please follow the steps below.

1. Download the latest version of the driver from our distributor [driverCentral](#).
2. Extract the file to your preferred ELAN driver storage location.
3. In configurator click on the Input/Output tab

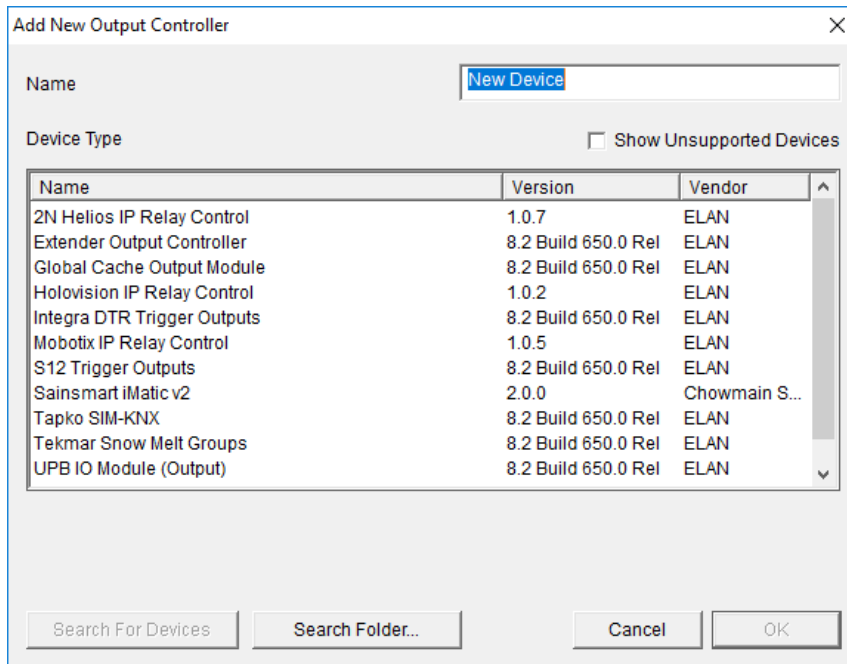


4. Click on the arrow next to Relay Outputs

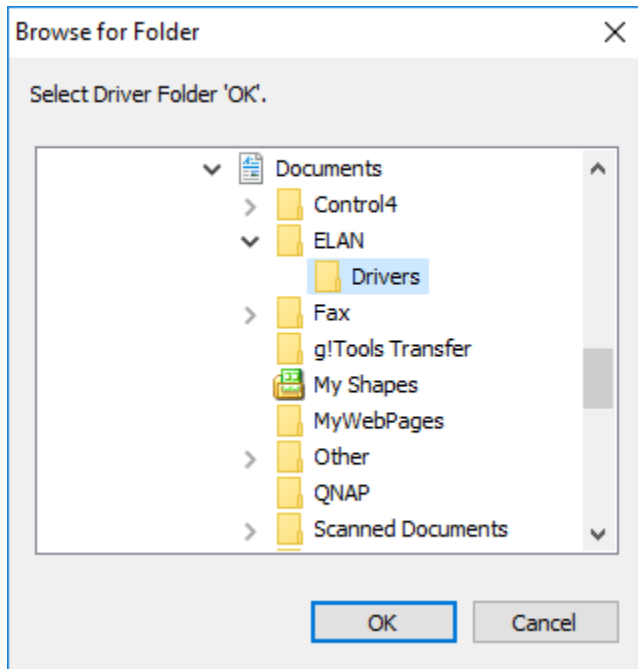
5. Click on Add New Output Controller



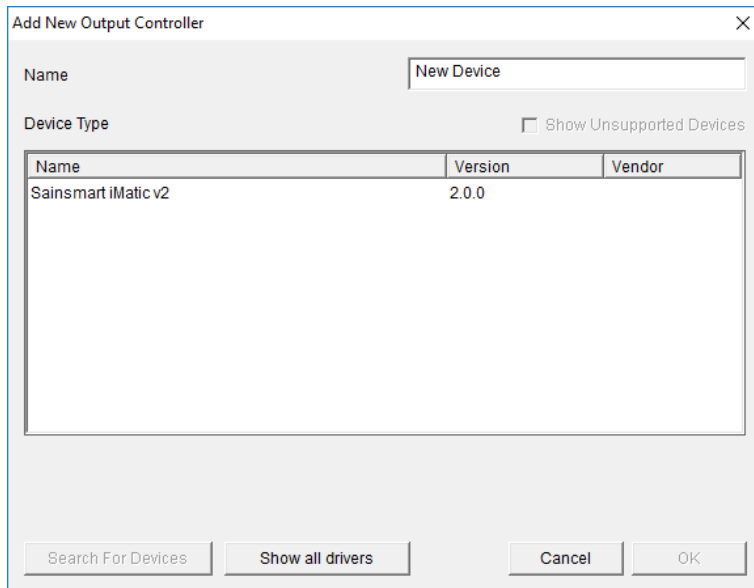
6. Click on the Search Folder button



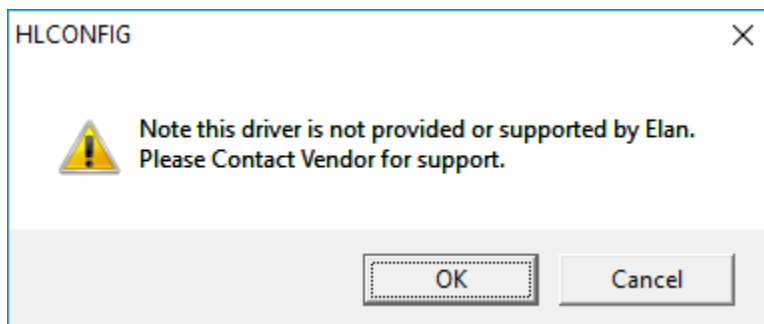
7. Select your driver folder and press ok



8. Select your Belkin Wemo Switch driver and press ok



9. Configurator will warn you that the driver is not provided or supported by Elan. Click on OK.



10. The driver will advise you that you have 7 days to test the driver out. If you have purchased an activation key please type it in here then click on Apply to activate the licence.

Activation Key	<input type="text"/>
Activation Status	TRIAL - 48 HOURS REMAINING

11. Note that if you have typed in a valid activation key your status will change to ACTIVATED (you need to click off of the driver onto something else and back again to see the changes to the status).

Activation Status	ACTIVATED
-------------------	-----------

12. Type in the IP Address of the Port of the Sainsmart iMatic v2.

Note: The default of 30000 is recommended if you have left it as default.

IP Address	<input type="text" value="172 . 16 . 16 . 123"/>
Port	<input type="text" value="30000"/>

13. Congratulations you have successfully setup the Sainsmart iMatic v2 driver for ELAN. Now you need to program the relays to turn on and off via event maps.

g! CONFIGURATION DETAILS

The following table provides settings used in Configurator when connecting to Belkin Wemo Switch or Insight Switch devices. Please refer to the Configurator Reference Guide for more details.

In the table below:

- "<User Defined>", etc. Type in the desired name for the item.
- "<Auto Detect>", etc. The system will auto detect this variable.

Devices	Variable Name	Setting	Comments
Output Controller (Sainsmart iMatic v2)	Name	<User Defined>	
	System #	<Auto Detect>	
	Driver Version	<Auto Detect>	
	Driver Vendor	Chowmain Software & Apps	
	Device Type	Sainsmart iMatic v2	
	Activation Key	<User Defined> This is the driverCentral activation Key	See Note 1
	Activation Status	<Auto Detect> This provides the licence status feedback	See Note 1
	IP Address	This is the IP address of the Sainsmart iMatic v2	
	Port	This is the 'port' defined in the Sainsmart webserver.	See Note 2

Notes:

1. The driver requires a valid licence for use. Licences can be purchased from the driverCentral website. All of the licences are site licences. This means that you can use as many instances of the driver as you want in a single system with the one licence. The driver also comes with a built in 7 day trials. The driver will provide feedback as to the state of the licence in the Activation Status field.
2. The Sainsmart iMatic v2 allows for you to change its default 'port'. This isn't really a port but changes part of its URL. Leave this as the default of 30000.

COMMON MISTAKES

1. This device will only accept a single IP connection at any time. I have found that multiple connections may lock up their webserver so please do not utilize the driver whilst configuring the device on the webserver.
2. Only a single Sainsmart iMatic v2 is supported on any network. Do not install more than one unit on the network.

ELAN DEVELOPER PARTNER INFORMATION

This ELAN driver was written and supported by:



<http://www.chowmainsoft.com>