

## Integration Note

Manufacturer:	<b>Oppo</b>
Model Number(s):	<b>All Bluray Players</b>
g! Core Module Version:	<b>g!8.2</b>
Driver Developer:	<b>Chowmain Software &amp; Apps</b>
Document Revision Date:	January 12, 2018

## Overview & Supported Features

Oppo Bluray players provide an unmatched A/V experience to home theater enthusiasts. Drawing from over a decade's worth of experience in advanced imaging processing technology and high fidelity audio performance, the Oppo Bluray players are the ideal source to complete the ultimate home theater and sound room.

The Chowmain Oppo Bluray driver for ELAN provides the most advanced 2 way feedback and control over your Oppo bluray player for ELAN. Create the perfect automated media experience for your customer by providing automated control over projection modes, room lighting, automated audio device startup and/or video device startup and more with our easy to use solution.



## Features

- Full two way feedback.
- Disc type detection enables you to program ELAN to automatically turn on the room based on the type of disc in the player. Eg it will turn on the receiver only if it detects an audio disc however if it detects a video disc it will also turn on the TV.
- Power On/Off feedback allows you to program room off macros when you press the physical power off button
- Commands to launch Netflix, Youtube and other application for BDP-203 and BDP-205 models.
- Play, Pause, Stop feedback
- Disk Tray Open, Close, Empty and Loading feedback
- Disc Type (Bluray, DVD-Video, DVD-Audio, SACD, CDDA, HDCD, VCD, SVCD, DATA) detection feedback
- Audio Type (Dolby Digital, Dolby Digital Plus, Dolby TrueHD, DTS, DTS-HD High Resolution, DTS-HD Master Audio, LPCM, MPEG Audio, CD Audio) detection feedback
- In Home Menu & Menu Menu feedback
- Source Resolution feedback
- Output Resolution feedback

## What hardware will this work on?

This driver will work for the following models via RS-232 Serial. It may also work with future models.

- BDP-83
- BDP-93
- BDP-95
- BDP-103
- BDP-103D
- BDP-105
- BDP-105D
- BDT-101CI
- UDP-203
- UDP-205

**Can you give us some examples of how we could use this driver?**

- Automatically start up the receiver when the user puts in an audio disc.
- Automatically start up the tv/projector and receiver when the user puts in a video disc.
- Automatically dim lights when the movie starts playing.
- Automatically raise the lights when the movie pauses or stops.
- Automatically turn the whole AV system off when the user presses the physical power off button on the unit.
- Program different projection modes based on resolution and aspect ratio feedback.
- Program different screen masking based on resolution and aspect ratio feedback.
- Change receiver settings when different audio types are detected.
- Utilise the awesome built in DAC for audiophiles. Control the volume of the Oppo directly with two way feedback

**Do you offer showroom discounts?**

We offer dealers a free showroom licence for demonstration and educational purposes. See link below for T&C's and signup procedure.

[Chowmain Dealer Showroom FAQ](#)

**I want to try this driver out before buying it?**

All Chowmain drivers for ELAN come with a 7 day trial. This is activated once you add the driver to the project (internet required). No additional steps are necessary.

Any feature not specifically noted as supported should be assumed to be unsupported.
--

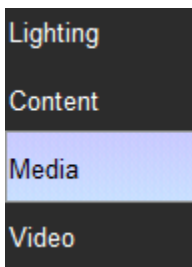
## g! Configuration

This driver will provide control and channel feedback for the Oppo bluray player. The driver requires a valid licence for use. Licences can be purchased from Chowmain's distributor [driverCentral](#). Customers can also trial the driver out for 7 days prior to licence purchase. Dealers who have showrooms can demonstrate the driver for free via the Chowmain Dealer Showroom Licence. You can apply for this licence via the [Chowmain website](#). Please follow the steps below. If you encounter any issues please submit a ticket via the driverCentral website.

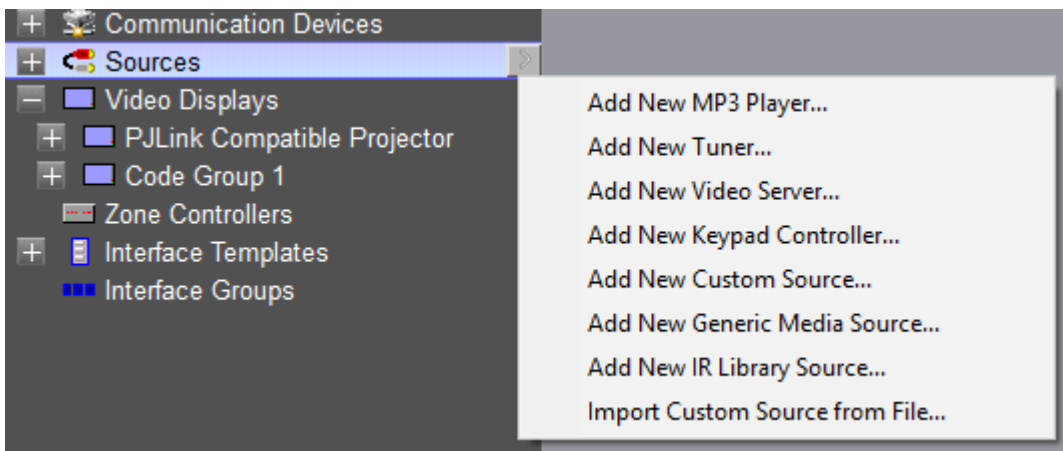
## Installation Process

Please follow connect the Oppo bluray player via RS232 serial before proceeding with the g! Configuration steps below.

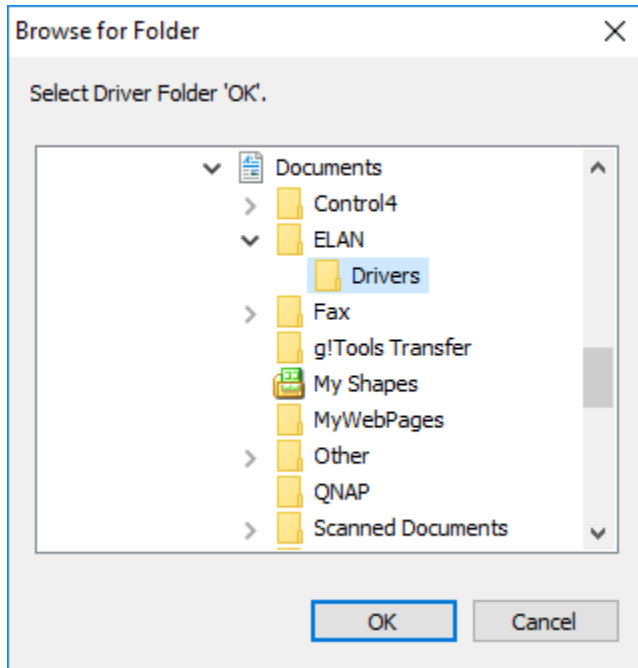
1. Download the latest version of the driver from our distributor [driverCentral](#).
2. Extract the file to your preferred ELAN driver storage location.
3. In configurator click on the Media tab



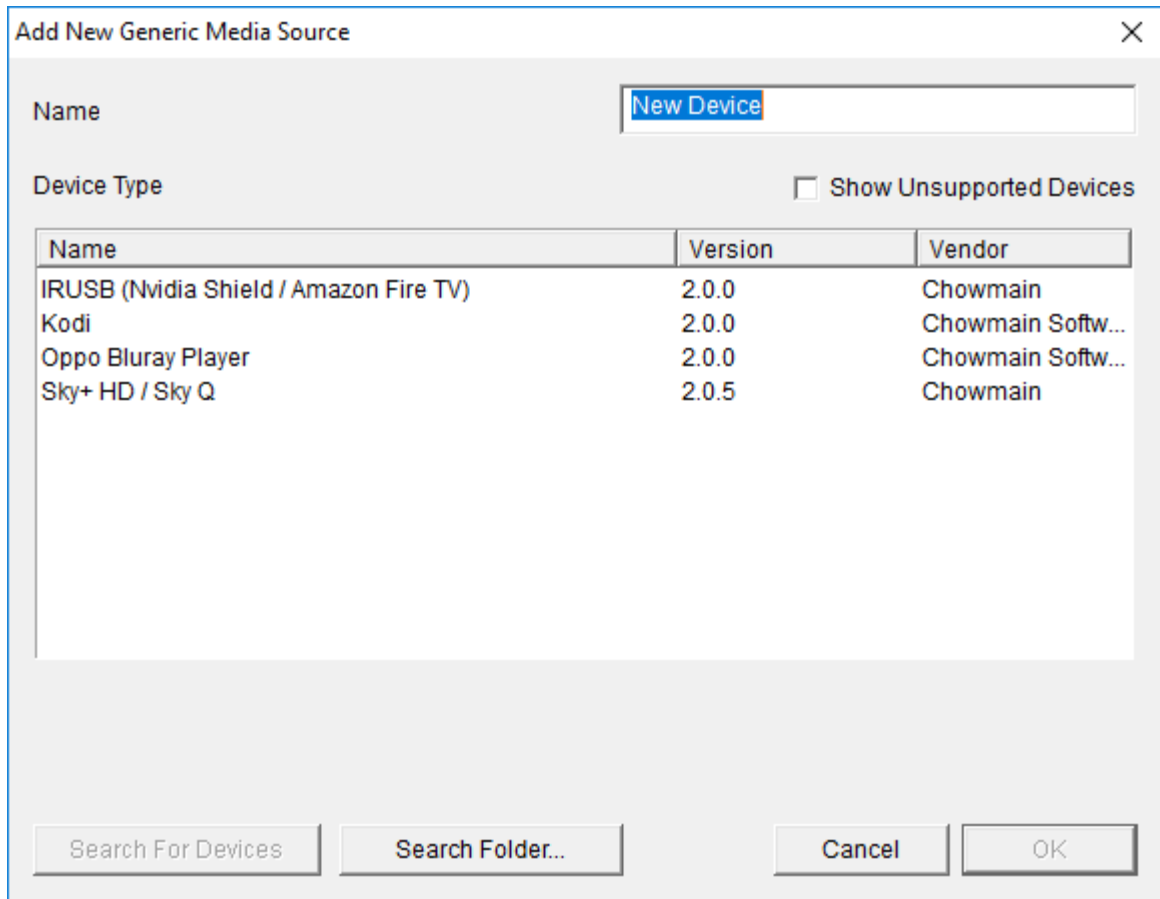
4. Click on the arrow next to Sources Devices
5. Click on Add New Generic Media Source



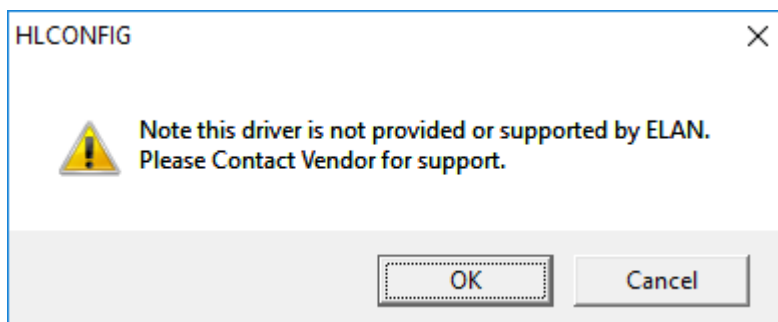
6. Click on the Search Folder button
7. Select your driver folder and press ok



8. Select the Oppo Bluray Player driver.



9. Configurator will warn you that the driver is not provided or supported by Elan. Click on OK.



10. Highlight the Oppo Bluray Player driver with the  symbol next to it.

11. Set the Communications Device to the appropriate device (note you may need to add in the serial port if you have not done so already)

Communication Device	Serial Port
	Serial Port

12. The driver will advise you that you have 7 days to test the driver out. If you have purchased an activation key please type it in here then click on Apply.

Activation Key	
Activation Status	TRIAL - 48 HOURS REMAINING

13. Note that if you have typed in a valid activation key your status will change to ACTIVATED (you need to click off of the driver onto something else and back again to see the changes to the status).

Activation Status	ACTIVATED
-------------------	-----------

14. Select the desired level of feedback. Basic Feedback is required for most feedback but aspect ratio feedback and resolution feedback requires detailed feedback. Detailed feedback will cause more traffic on the serial connection which will increase the processing of the system.

Feedback Mode	No Feedback
Communication Device	No Feedback
	Basic Feedback
	Detailed Feedback

15. Highlight the Oppo Bluray Player driver with the  symbol next to it.

16. If you want the Oppo to power on and off set Power Management Enable to Yes

Power Management Enable	Yes
-------------------------	-----

17. Expand on your Video Display or your Zone Controller
18. Click on the input you want to configure
19. Assign the Oppo Bluray Player driver as the source device
20. Congratulations you have successfully setup the Oppo Bluray Player driver for ELAN. Now you need to program customized event maps based on the feedback from the Oppo.



## g! CONFIGURATION DETAILS

The following table provides settings used in Configurator when connecting to Sky+HD / SkyQ devices. Please refer to the Configurator Reference Guide for more details.

Devices	Variable Name	Setting	Comments
Generic Media Device (Oppo Bluray Player)	Name	<User Defined>	
	System #	<Auto Detect>	
	Driver Version	<Auto Detect>	
	Driver Vendor	Chowmain Software & Apps	
	Device Type	Oppo Bluray Player	
	Activation Key	<User Defined> This is the driverCentral activation Key	See Note 1
	Activation Status	<Auto Detect> This provides the licence status feedback	See Note 1
	Debug Mode	<User Defined> This sets the logging for the driver.	See Note 2
	Feedback	This determines how much feedback the Oppo should send ELAN	See Note 3

**Notes:**

1. The driver requires a valid licence for use. Licences can be purchased from the driverCentral website. All of the licences are site licences. This means that you can use as many instances of the driver as you want in a single system with the one licence. The driver also comes with a built in 7 day trial. The driver will provide feedback as to the state of the licence in the Activation Status field.
2. Debug Mode – This is used for troubleshooting. By default it is set to off. print is used by technical support for live troubleshooting. log is used to output to the driver log. Print and log is used to provide technical support with live troubleshooting and log to driver log at the same time.
3. The sends a command to the Oppo. As such the driver needs to be connected to a communications device and the physical connection needs to be made BEFORE setting this dropdown.
  - **No Feedback** – The Oppo will not send any feedback at all. As such no two way functionality will work.
  - **Basic Feedback** – The Oppo will send feedback for most events but does not include aspect ratio feedback and resolution feedback.
  - **Detailed Feedback** – The Oppo will send feedback for all events including updates every second when a movie starts. This will take up more processing power.

## COMMON MISTAKES

1. You need to assign a communications device first before setting feedback mode or licencing.
2. You have not assigned power on / off functionality

## ELAN DEVELOPER PARTNER INFORMATION

This ELAN driver was written and supported by:



<http://www.chowmainsoft.com>