

Integration Note

Manufacturer:	Belkin
Model Number(s):	Wemo Switch & Insight Switch
g! Core Module Version:	g!8.2
Driver Developer:	Chowmain Software & Apps
Document Revision Date:	January 9 2018

Overview & Supported Features

The Belkin WeMo Switch (Model Number F7C027) and Insight Switch (Model Number F7C029) are WiFi based smart outlets which can be used to control any household plug-in device such as lamps, fans and other appliances up to 10 amps. It has US/UK/AU-NZ plug types and is extremely affordable and can be easily integrated into the ELAN home automation system using the Chowmain Belkin WeMo driver for control and feedback.

THE FOLLOWING OPTIONS ARE SUPPORTED BY THE WEMO DRIVER:

- Support for the switch and insight switch devices.
- Auto discovery of IP address and port by entering in the serial number of the wemo
- Auto update of IP address and port upon change
- Auto import of all Wemo switch devices on the network.
- Instantaneous feedback when wemo device switches on/off
- On and Off control over the outlet
- Instantaneous feedback from the outlet

THE FOLLOWING OPTIONS ARE NOT SUPPORTED BY THE WEMO DRIVER:

- Other wemo devices are not supported

Any feature not specifically noted as supported should be assumed to be unsupported.
--

Wemo Configuration

Each Wemo device will need to be installed and connected to the wifi network first prior to driver setup via the iOS or Android Belkin Wemo application. Take note of the serial number of each outlet prior to installation (this can be found on the rear of the wemo).

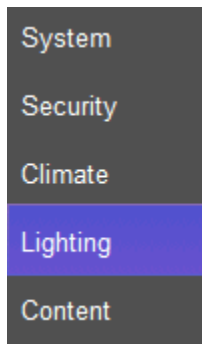
g! Configuration

This driver will provide control and feedback for any Belkin Wemo Switch or Insight Switch on your network. The driver requires a valid licence for use. Licences can be purchased from Chowmain's distributor [driverCentral](#). Customers can also trial the driver out for 7 days prior to licence purchase. Dealers who have showrooms can demonstrate the driver for free via the Chowmain Dealer Showroom Licence. You can apply for this licence via the [Chowmain website](#). Please follow the steps below. If you encounter any issues please submit a ticket the driverCentral website.

Installation Process

Once you have physically installed your Belkin Wemo Switch or Insight Switch and have connected it via wifi to your network please follow the steps below.

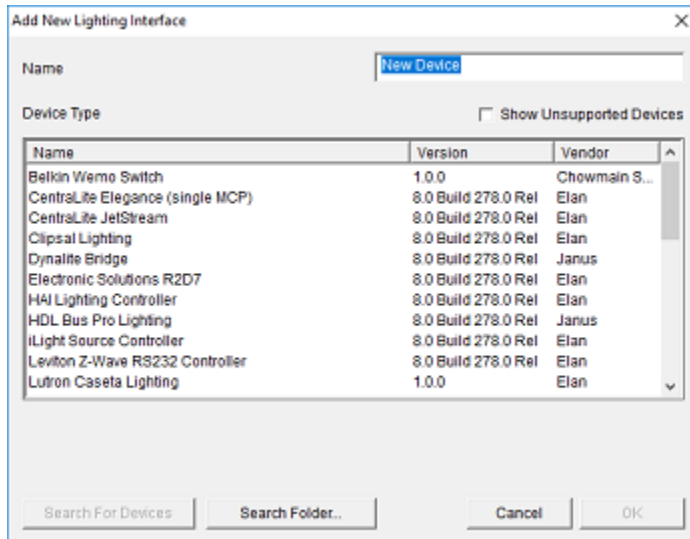
1. Download the latest version of the driver from our distributor [driverCentral](#).
2. Extract the file to your preferred ELAN driver storage location.
3. In configurator click on the Lighting tab



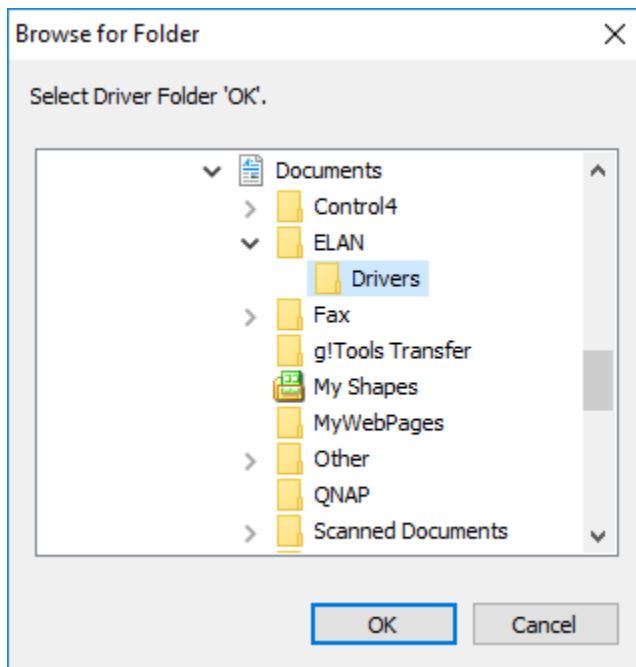
4. Click on the arrow next to Lighting Interfaces
5. Click on Add New Lighting Interface



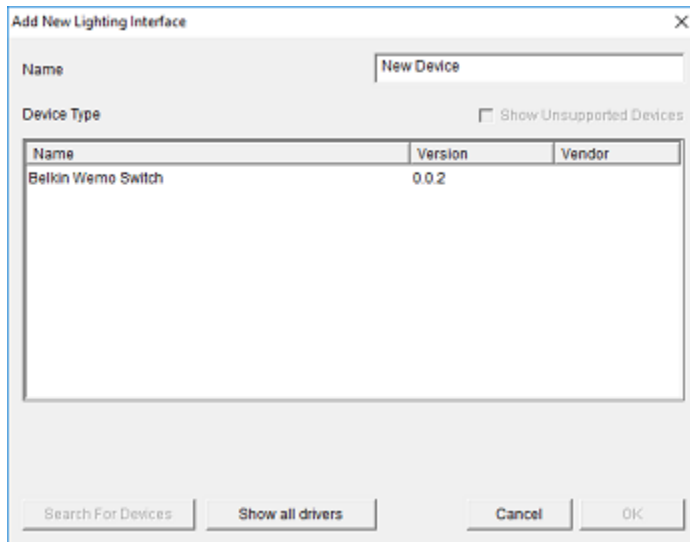
6. Click on the Search Folder button



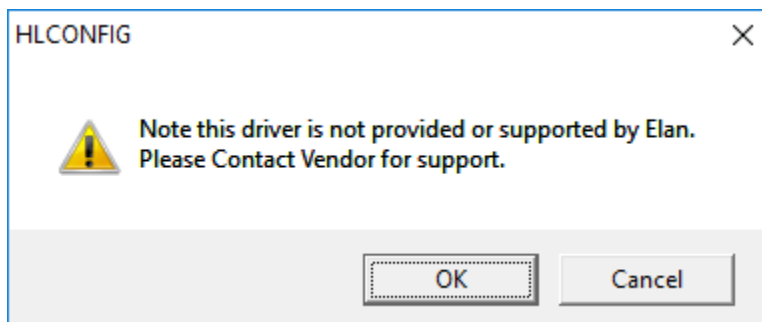
7. Select your driver folder and press ok



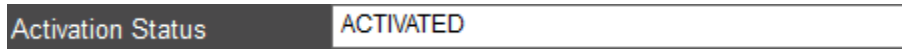
8. Select your Belkin Wemo Switch driver and press ok



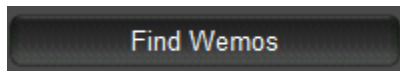
9. Configurator will warn you that the driver is not provided or supported by Elan. Click on OK.



10. The driver will advise you that you are on a TRIAL. If you have purchased an activation key please type it in here then click on Apply. Trials last for 7 days.
11. Note that if you have typed in a valid activation key your status will change to ACTIVATED (you need to click off of the driver onto something else and back again to see the changes to the status).



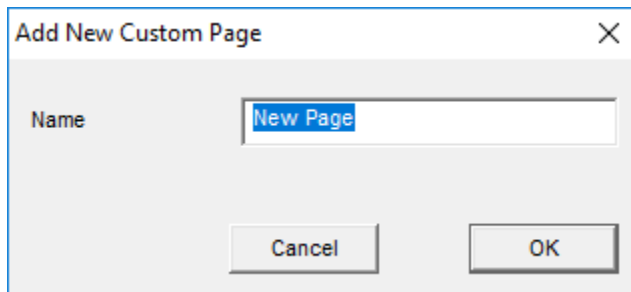
12. Click on the Find Wemos button to find all wemos on the local network.



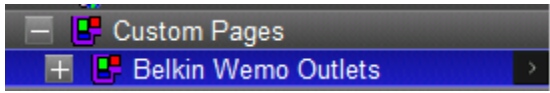
13. The driver will now automatically import every wemo device it has found on the network.
14. Now we have to create a custom page to display the wemo.
15. Click on the arrow next to Custom Pages
16. Click on Add New Custom Page



17. Type a name for the page



18. Click on the + symbol next to your new custom page to expand it

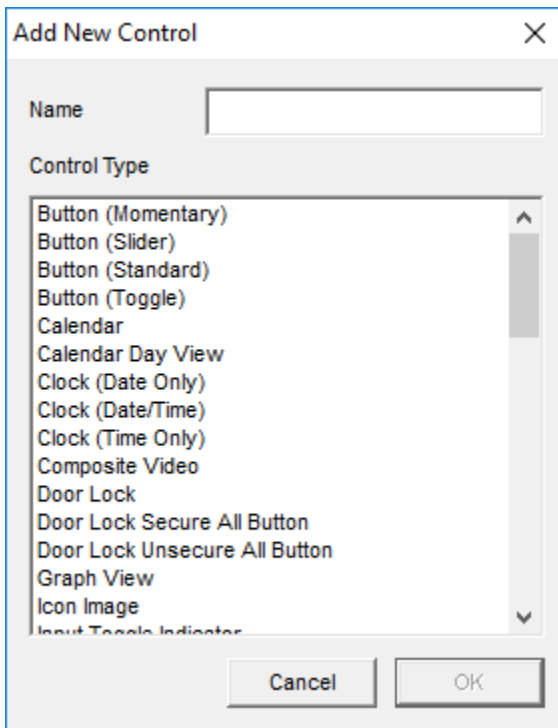


19. Select the format you want to create your page for (you may need to create for all 3 formats).

20. Right click on the page and 'Add New Control'



21. It will now prompt you for the control type

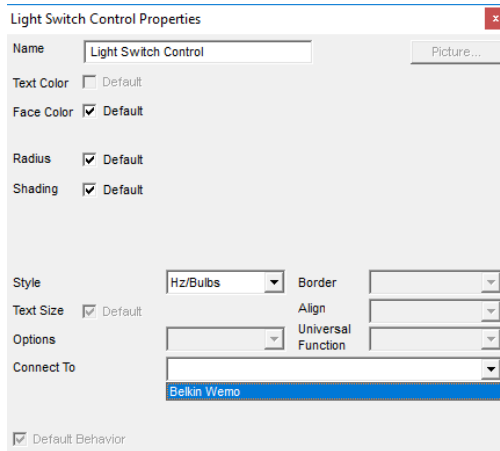


22. You can utilize the following controls for the wem

- a. Light Switch Control
- b. Light Toggle Control

23. Right click on the control and click on Show properties

24. Click on the Connect to drop down box and select the wemo switch you want to tie in.



25. Repeat steps 20 to 24 for each wemo outlet you have installed.

26. Congratulations you have successfully setup the Belkin Wemo driver for ELAN.

g! CONFIGURATION DETAILS

The following table provides settings used in Configurator when connecting to Belkin Wemo Switch or Insight Switch devices. Please refer to the Configurator Reference Guide for more details.

In the table below:

- "<User Defined>", etc. Type in the desired name for the item.
- "<Auto Detect>", etc. The system will auto detect this variable.

Devices	Variable Name	Setting	Comments
Lighting Interface (Belkin Wemo Switch)	Name	<User Defined>	
	System #	<Auto Detect>	
	Driver Version	<Auto Detect>	
	Driver Vendor	Chowmain Software & Apps	
	Device Type	Belkin Wemo Switch	
	Activation Key	<User Defined> This is the driverCentral activation Key	See Note 1
	Activation Status	<Auto Detect> This provides the licence status feedback	See Note 1
	Debug Mode	<User Defined> This sets the logging for the driver.	See Note 2
	Poll Wemos	<User Defined> false = UPnP Subscription feedback, true = polled feedback.	See Note 3
	IP Address	<Auto Detect>	

Devices	Variable Name	Setting	Comments
	Port	<Auto Detect>	
Lighting Device (On/Off Device)	Name	<User Defined>	
	System #	<Auto Detect>	
	Device Type	On/Off Device	
	Hide Device from Scheduler	<User Defined> Yes / No	
	Wemo Serial Number	<User Defined / Auto imported> Wemo Serial Number (found on physical unit)	See Note 4

Notes:

1. The driver requires a valid licence for use. Licences can be purchased from the driverCentral website. All of the licences are site licences. This means that you can use as many instances of the driver as you want in a single system with the one licence. The driver also comes with a 7 day trials. Trials require internet for activation. The driver will provide feedback as to the state of the licence in the Activation Status field.
2. Debug Mode – This is used for troubleshooting. By default it is set to off. print is used by technical support for live troubleshooting. log is used to output to the driver log. Print and log is used to provide technical support with live troubleshooting and log to driver log at the same time.
3. By default this is set to false. Polling of wemos should only be done if the g! system is not set to a static IP address.
4. The driver will automatically import the serial number of the wemo it has found..

COMMON MISTAKES

1. This driver only supports the wemo switch and insight switch. It does not support any other wemo device.

ELAN DEVELOPER PARTNER INFORMATION

This ELAN driver was written and supported by:



<http://www.chowmainsoft.com>